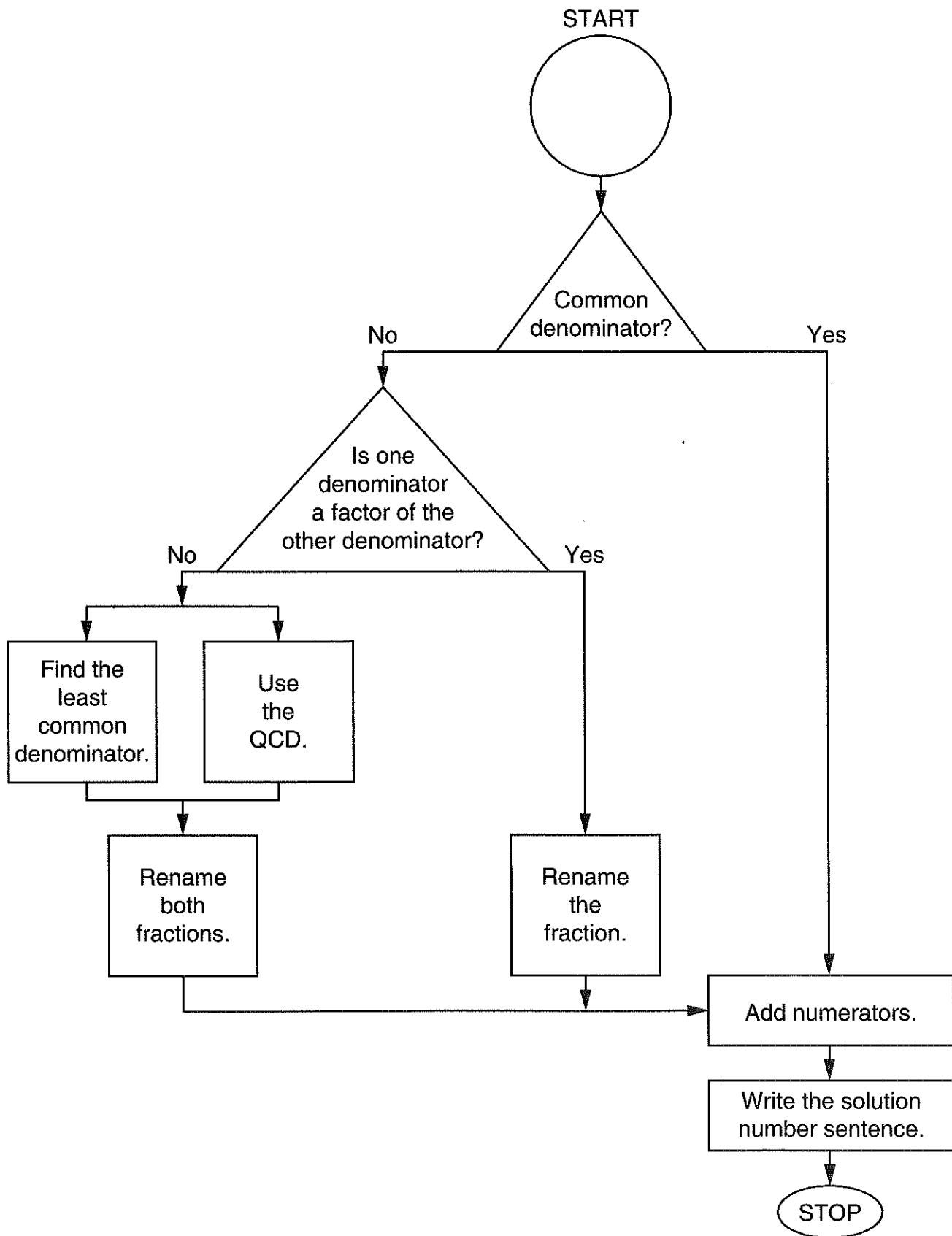
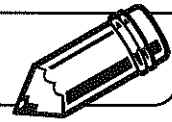


LESSON
8•4**Charting Common Denominators**

LESSON
8•4**Exploring Equivalent Fractions**

1. Do equivalent fractions convert to the same decimal? _____
2. Complete the fraction column in the table so there are 10 equivalent fractions.
3. Use your calculator to convert each fraction to a decimal. Write the display in the decimal column. (Don't forget to use a repeat bar, if necessary.)

Fractions	Decimals

4. Explain your results. Describe the relationship between the equivalent fractions and their decimal form.
